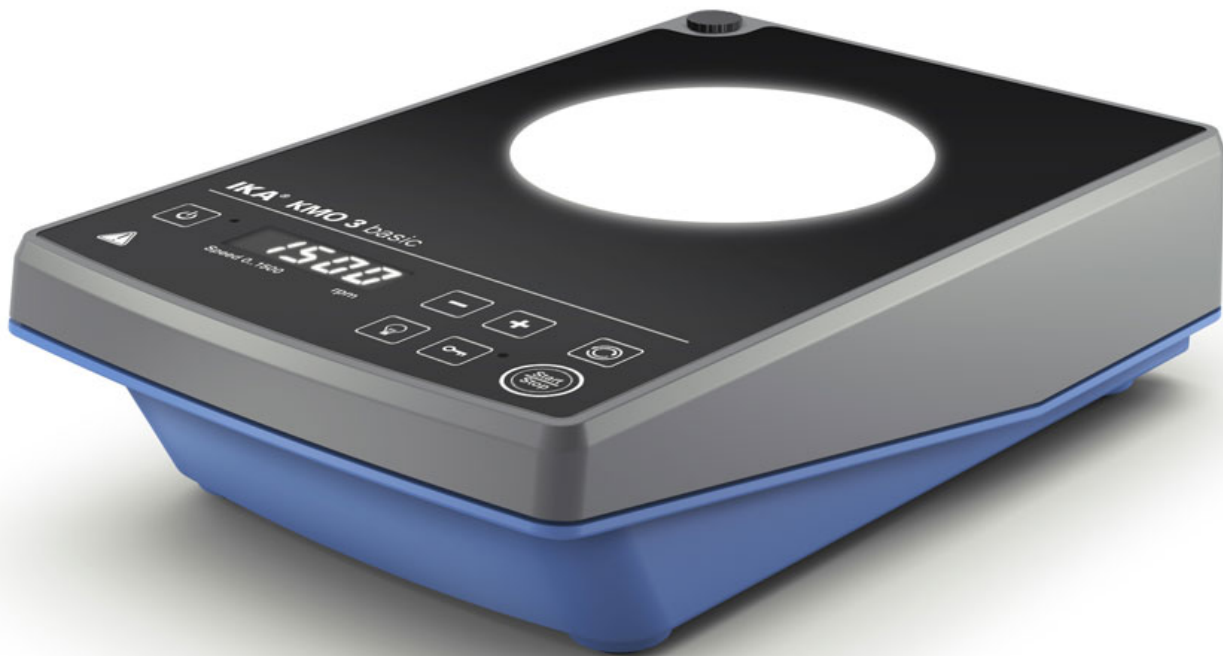


# IKA

designed for scientists



## KMO 3 basic

/// Data Sheet

The award-winning KMO 3 basic is a small but powerful magnetic stirrer without heating function. It provides:

- unique design with glass surface
- brilliant, clear white display
- illuminated, flat stirring plate
- key-lock button
- reverse rotation
- integrated USB interface (control via labworldsoft and use of Firmware Update Tool)

[www.ika.com](http://www.ika.com)

Subject to technical changes





designed for scientists

- recessed thread for support rod
- protection class IP42



designed for scientists

## Technical Data

|   |                  |
|---|------------------|
| Number of stirring positions  | 1                |
| Stirring quantity max. per stirring position (H <sub>2</sub> O) [l]         | 5                |
| Maximum load [kg]   | 10               |
| Motor rating output [W]   | 9                |
| Direction of rotation   | right / left     |
| Speed display set-value   | LED              |
| Speed adjustment  | Touch key        |
| Speed range [rpm]   | 10 - 1500        |
| Setting accuracy speed [rpm]  | 10               |
| Stirring bar length [mm]  | 20 - 80          |
| Self-heating of the set-up plate by max. stirring (RT:22°C/duration:1h) [K] | +2               |
| Set-up plate material   | glass            |
| Set-up plate dimensions [mm]  | 140 x 120        |
| Automatic reverse rotation  | yes              |
| Set-up plate illuminated  | yes              |
| Illumination level max. [lx]  | 15000            |
| Speed deviation (no load, nominal voltage, at 1500rpm + 25 °C) [%]          | ±2               |
| Dimensions (W x H x D) [mm]   | 153 x 62.5 x 227 |
| Weight [kg]   | 1.471            |
| Permissible ambient temperature [°C]  | 5 - 40           |
| Permissible relative humidity [%]   | 80               |
| Protection class according to DIN EN 60529                                  | IP 42            |
| USB interface   | yes              |
| Voltage [V]   | 100 - 240        |
| Frequency [Hz]  | 50/60            |
| Power input [W]   | 13               |
| Power input standby [W]   | 0.8              |
| DC Voltage [V=]   | 24               |
| Current consumption [mA]  | 500              |